



50th MOSQUITO CATAMARAN NATIONAL CHAMPIONSHIPS



Sun 1 Jan 2023 – Fri 6 Jan 2023
Gippsland Lakes Yacht Club (GLYC) and
Victorian Mosquito Catamaran Association (VMCA)
Paynesville, Victoria, Australia

NOTICE OF RACE

1. RULES

The regatta will be governed by the rules as defined in the Racing Rules of Sailing.

2. ELIGIBILITY AND ENTRY

2.1. The regatta is open to all boats of the Mosquito Catamaran class.

2.2. Competitors must be financial members of a State Mosquito Catamaran Association.

2.3. Competitors may enter by completing the entry form on the Mosquito web site -
www.theracingcat.com .

2.4. Late entries will be accepted.

3. FEES

3.1. Required fees are as follows:

<i>Class</i>	<i>Fee</i>	<i>Early entry (paid by 30 Nov 2022)</i>
Mosquito Mk I (with/without Spin)	\$280	\$260
Mosquito Mk II (with/without Spin)	\$370	\$350

3.2. Payment can be made by EFT to the VMCA bank account:

Commonwealth Bank - BSB: 063 009 Account: 902303 *Please include surname in details.*

3.3. Entry fees include welcome BBQ, presentation dinner and event merchandise for all competitors.
Extra meals can be booked on entry. *See "Other Information" below for costs.*

4. SCHEDULE

4.1.

Day / Date	Event	Time / Warning Signal
Sunday 1 Jan	Registration and Measurement Invitation race Welcome BBQ	09:00 to 14:00 15:00 18:00
Monday 2 Jan	Competitor Information Session Racing session 1	11:00 13:00
Tuesday 3 Jan	Racing session 2 NMCCA AGM	13:00 ~17:00
Wednesday 4 Jan	Reserve day	
Thursday 5 Jan	Racing session 3	13:00
Friday 6 Jan	Racing session 4 Presentation	11:00 18:00

4.2. A maximum of **10** races are scheduled.

4.3. No warning signal shall be made after 15:00 on Fri 6 Jan 2021.

4.4. No more than 3 races will be sailed per session.

5. MEASUREMENT

5.1. Each boat shall be listed on the NMCCA register of measured boats:- available on the NMCCA website's "Documents" page:

www.theracingcat.com/index.php?page=measured-boat-register

5.2. Boats may be checked for compliance at any time during the event at the discretion of the organisers.

6. SAILING INSTRUCTIONS

The sailing instructions will be displayed on the official notice board at the event and available for electronic download from the Mosquito class web site www.theracingcat.com.

7. VENUE

Racing will be conducted from Gippsland Lakes Yacht Club. Attachment 1 shows the location of the venue and the approximate location of the racing area.

8. THE COURSES

8.1. The courses to be sailed will be:

Triangle/windward return format for non-spinnaker divisions 1 and 2 (comprising Mk I and Mk II); and Windward-return format for spinnaker division 3.

8.2. Course diagrams, including the approximate angles between legs, the order in which marks are to be passed, and the side on which each mark is to be left will be provided in the Sailing Instructions.

8.3. The approximate race duration will be 40mins.

9. PENALTY SYSTEM

Rule 44.1 is changed so that the Two-Turns Penalty is replaced by the One-Turn Penalty.

10. SCORING

10.1. **Four races** are required to be completed to constitute a series.

10.2. (a) When **fewer than 5 races** have been completed, a boat's series score will be the total of her race scores.

(b) When **5 to 8 races** have been completed, a boat's series score will be the total of her race scores excluding her worst score.

(c) When **9 or more races** have been completed, a boat's series score will be the total of her race scores excluding her two worst scores.

11. SAFETY

Attention is drawn to **Rule 1.2** (Life-Saving Equipment and Personal Flotation Devices) and **Rule 4** (DECISION TO RACE)

Discretionary penalties will apply to Rule 41 – Outside Help. Actions of the Race Committee in retrieving crews from the water and returning them to their boats may not be penalised.

12. RIGHTS TO USE NAME AND LIKENESS

In participating in an event, a competitor automatically grants to the organising authority and the sponsors of the event, the right in perpetuity, to make, use and show, from time to time and at their discretion, any motion pictures, still pictures and live, taped or film television and other reproductions of him/her during the period of the competition for the said event in which the competitor participates and in all material related to the said event without compensation.

13. RADIO COMMUNICATION

Except in an emergency, a boat that is racing shall not make voice or data transmissions and shall not receive voice or data communication that is not available to all boats.

14. PRIZES

Prizes will be given as follows:

MkI National Champion;

MkII National Champion; and

Spinnaker National Champion

Other prizes will be awarded at the discretion of the organisers.

15. DISCLAIMER OF LIABILITY

RRS 3 states: 'The responsibility for a boat's decision to participate in a race or to continue to race is hers alone.' By participating in this event each competitor agrees and acknowledges that sailing is a potentially dangerous activity with inherent risks. These risks include strong winds and rough seas, sudden changes in weather, failure of equipment, boat handling errors, poor seamanship by other boats, loss of balance on an unstable platform and fatigue resulting in increased risk of injury.

Inherent in the sport of sailing is the risk of permanent, catastrophic injury or death by drowning, trauma, hypothermia or other causes.

16. INSURANCE

Each participating boat shall be insured with valid third-party liability insurance with a minimum cover of AU\$10M or the equivalent.

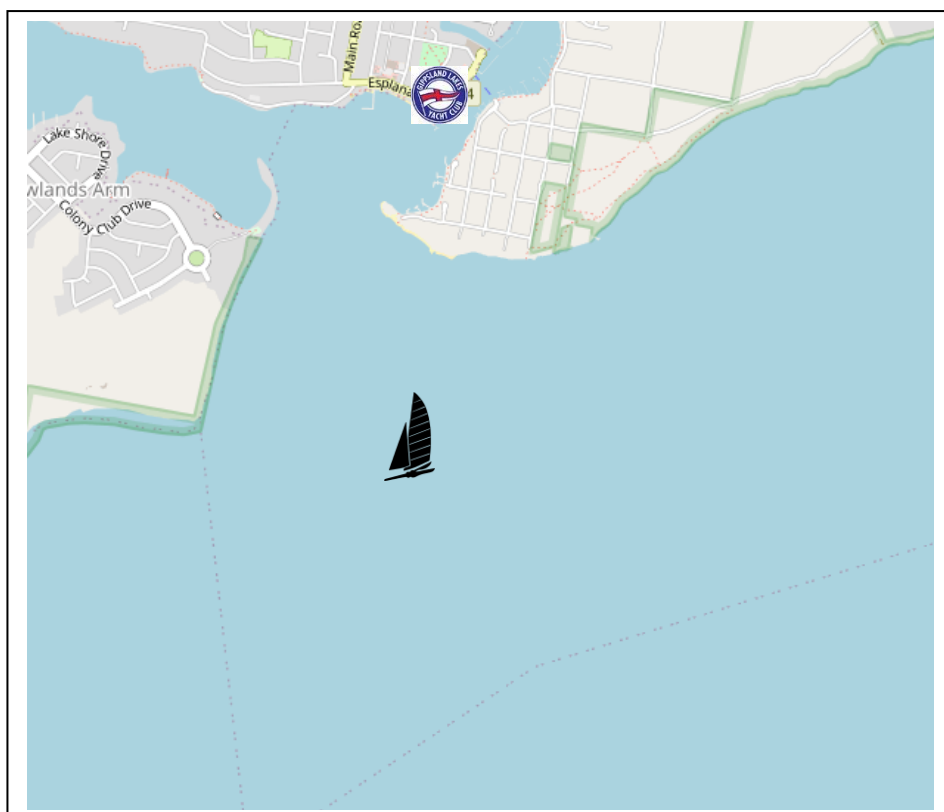
17. AMENDMENTS

Any amendment to this Notice of Race will be posted on the Official Notice Board (GLYC) and may also be posted on the event web site at: www.theracingcat.com

18. FURTHER INFORMATION

For further information, please contact: info@theracingcat.com

ATTACHMENT 1: Map of Gippsland Lakes YC Sailing Area



Other Information

CATERING

Welcome BBQ – 6 pm, Sunday 1 January at Gippsland Lakes YC.

Cost is included in entry fee for competitors. Extras \$20 per person. Children under 12 free.

Presentation meal – 6 pm, Friday 6 January at Gippsland Lakes YC.

Cost is included in entry fee for competitors. Extras \$35 per person. Children under 12 free.

ACCOMMODATION

We encourage you to book asap, as this is a very popular time, some unpowered camping should be available up to the start of the event.

Visit Paynesville website

<http://www.visitpaynesville.com.au/>

Gippsland Lakes Escapes

<http://www.gippslandlakesescapes.com.au/>

03 5156 0432

Eagle Point Caravan Park

<http://eaglepointcaravanpark.com/>

03 5156 6232

Eagle Bay Cottage

<https://www.travelvictoria.com.au/paynesville/eaglebaycottage/>

(a fully self contained 2 bedroom cottage, 2 x queen sized beds)

Tait Street, Eagle Point

0409 566 345

The Old Pub, Paynesville

<http://publocation.com.au/pubs/vic/paynesville/the-old-pub>

03 5156 6442

The Abbey – Raymond Island

<http://theabbey.org.au/>