



2023/24 Victorian Trailable Yacht and Sports Boat Championships

Incorporating the following class titles:

National Noelex Championships

Castle Yacht Owners Association of Victoria Championships

Ultimate Yacht Association Championships

Conducted by:

Gippsland Lakes Yacht Club

On behalf of

Victorian Trailable Yacht Division of Australian Sailing

SAILING INSTRUCTIONS

Version 2: Published 22/02/2024

[DP] – A rule for which the penalty is at the discretion of the jury or protest committee.

1. Rules

- 1.1. Races will be governed by the rules as defined in The Racing Rules of Sailing (RRS) and the Australian Sailing (AS) Special Regulations Part 1.

2. Changes to Sailing Instructions (SI's)

- 2.1. Any change to the Sailing Instructions made ashore will be posted before 09:00 hours on the day it will take effect, except that any change to the schedule of races will be posted by 20:00hrs on the day before the change will take effect. This notice will be displayed on the Official Notice Board (ONB) at GLYC.

3. Communications with Competitors

- 3.1. Notices to competitors will be posted on the official notice board. Where possible information may be displayed on the GLYC event website.
- 3.2. All radio communications will be conducted on VHF Channel 77.
- 3.3. Prior to and during racing, boats are required to keep a listening watch on the designated radio frequency and channel 16.
- 3.4. The Race Committee may broadcast the course to be sailed, names/sail numbers of OCS boats, and/or other information. Any failure of, or defect in, such a broadcast will not be grounds for redress. This changes RRS 60.1(b) and 62.

4. Signals Made Ashore





- 4.1. Signals made ashore will be displayed from the Club's flagpole.
- 4.2. When a signal is displayed over a division flag it applies to that division only.
- 4.3. When Flag AP is displayed ashore, '1 minute' is replaced with 'not less than 30 minutes'. This changes Race Signals AP.

5. Race Sessions

- 5.1. Schedule of racing is as per the Notice of Race.
- 5.2. Races are to be run back-to-back within the race sessions. At the conclusion of the days racing the finish boat will display flags AP over A to signify no more racing today.
- 5.3. Any race finishing at the GLYC club finish will be the last race of the day.

6. Class Flags

- 6.1.

| Division | Flag Description |
|------------------------------|---|
| Division 1 (CBH >0.769) | Naval Numeral 1  |
| Division 2 (CBH 0.700-0.769) | Naval Numeral 2  |
| Division 3 (CBH <0.700) | Naval Numeral 3  |
| Non Spinnaker (all boats) | Naval Numeral 4  |

7. Racing Areas

- 7.1. The racing area will be on the Gippsland Lakes as illustrated in Appendix A.

8. Courses

- 8.1. Except for shortening, the course will not be changed after the starting signal. This changes RRS 33.
- 8.2. The course to be raced will be selected from Appendix B.
- 8.3. When Flag K is displayed, the first leg will be an additional short beat from the starting line to an inflatable mark laid to windward. This mark is to be rounded in accordance with the red or green flag displayed from the start boat.

9. Marks

- 9.1. Except for marks forming the Starting and Finishing lines, all course marks are designated "Rounding Marks" in accordance with RRS Definition "Sail the Course". Marks are to be rounded in the sequence shown in SI Appendix B.
- 9.2. The marks including their GPS positions for passage style races, and descriptions are listed in Appendix B.
- 9.3. All fixed navigational marks are marks of the course and must be passed on their appropriate side.

10. Sign On & Off

10.1. Sign on

10.1.1. On the day of the race, and before going afloat, the person in charge (RRS 46) shall sign on for the race :

- a. On the sheet provided at the entrance to the breezeway.
- b. Or by advising the tower by radio on Channel 77

10.2. Sign off

10.2.1. At the conclusion of the day's racing the boat shall sign off :

- a. On the sheet provided at the entrance to the breezeway.
- b. Or by advising the tower by radio on Channel 77

10.2.2. For races finishing at the Clubhouse, sailing through the finish line will signify signing off

11. The Start

11.1. Races will be started in accordance with RRS 26.

11.2. Sequential starting of subsequent divisions will follow with the start of the preceding division being the next warning signal.

11.3. General Recalls will be restarted at the end of the start order.

11.4. The starting line is between a staff displaying an orange flag on the Race Committee Vessel and port end starting mark with an orange flag

11.5. [DP] Boats whose warning signal has not been made shall avoid the starting area during the starting sequence for other races.

11.6. A boat that came to the starting area but did not start within 10 minutes after her starting signal will be scored DNS without a hearing. This changes RRS 63.1, A4 and A5.

12. The Finish

12.1. **Committee Boat** - The Finish line will be between a staff displaying a Blue flag on the Committee Boat, and a finishing mark with an orange flag or a designated mark of the course.

12.2. For passage style courses the Finish line will be in the vicinity of where the race was started. Boats are to cross the finish line in the direction from the last mark of the course to the finish.

12.3. **Clubhouse Finish** - The Finish Line will be an extension of the line from the GLYC Tower to the light pole on the Grassy Point Jetty

12.4. [DP] After finishing, boats shall clear the finish line and not interfere with any other boats still racing.

13. Penalty System

13.1 A boat may take a Two-Turns Penalty when she may have broken one or more rules of Part 2 in an incident while racing. She may take a One-Turn Penalty when she may have broken rule 31.

13.2

13.2.1 When a boat may have broken a rule of Part 2 and rule 31 in the same incident she need not take the penalty for breaking rule 31;

13.2.2 If the boat caused injury or serious damage or, despite taking a penalty, gained a significant advantage in the race or series by her breach her penalty shall be to retire.

14. Time Limits

14.1. The time limits for all boats to sail the course and finish are shown with each course description.

14.2. Boats still racing after the time limit expires will be scored Time Limit Expired (TLE) without a hearing. This changes RRS 35, A5.1 & A5.2.

15. Protests and Requests for Redress

15.1. Protest forms are available from the breezeway cabinet at the GLYC clubhouse.

15.2. Protests and requests for redress or reopening shall be delivered to the Race Officer within the appropriate time limit.

15.3. The protest time limit is 60 minutes after the last boat has finished the last race of the day or the Race Committee signals "No more racing today", whichever is later.

15.4. Notices will be posted as soon as practicable to inform competitors of the date, time and place of hearings in which they are parties or named as witnesses.

16. Arbitration

16.1. Arbitration will be used in accordance with RRS Appendix "T".

16.2. The Arbitrator may be a member of any subsequent Jury or may give evidence to the Jury.

17. Replacement of Crew or Equipment

17.1. Substitution of competitors will not be allowed without prior written approval of the race committee.

17.2. Substitution of damaged or lost equipment will not be allowed unless authorized by the race committee. Requests for substitution shall be made to the committee at the first reasonable opportunity.

18. CBH Handicapping

18.1. The 2019 CBH listing shall be used for ratings, where a boat does not have a listed rating the organising authority reserves the right to allocate a provisional rating to allow a competitor to participate.

18.2. Allocated Handicap values will not be grounds for redress. This changes RRS 60.1(b) and 62.

19. Equipment and Measurement Checks

- 19.1. A boat or equipment may be inspected at any time for compliance with the class rules and sailing instructions. On the water, a boat can be instructed by a Sailing Committee appointed Safety Officer to proceed immediately to a designated area for inspection.

20. Official Boats

- 20.1. Official boats will fly a GLYC burgee.

21. Support Boats

- 21.1. Team leaders, coaches and other support personnel shall stay outside areas where boats are racing from the time of the warning signal for the first division to start until all boats have finished or retired or the race committee signals a postponement, general recall or abandonment.

22. Haul-Out Restrictions

- 22.1. Boats may be hauled out during the regatta.

23. Disclaimer of Liability

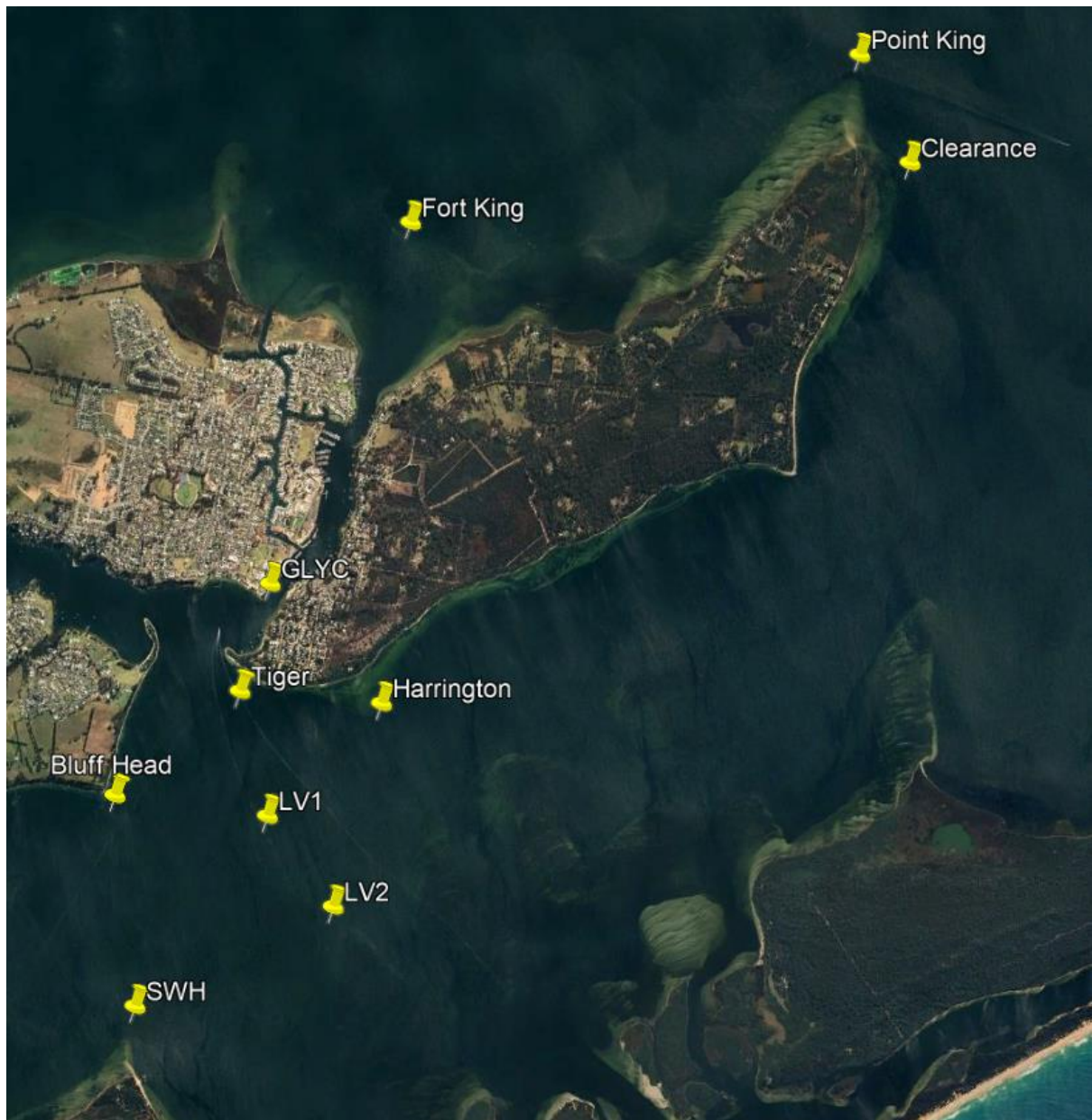
- 23.1. RRS 3 states: 'The responsibility for a boat's decision to participate in a race or to continue to race is hers alone.' By participating in this event each competitor agrees and acknowledges that sailing is a potentially dangerous activity with inherent risks. These risks include strong winds and rough seas, sudden changes in weather, failure of equipment, boat handling errors, poor seamanship by other boats, loss of balance on an unstable platform and fatigue resulting in increased risk of injury. Inherent in the sport of sailing is the risk of permanent, catastrophic injury or death by drowning, trauma, hypothermia or other causes.

Competitors participate in the regatta entirely at their own risk. The organising authority will not accept any liability for material damage or personal injury or death sustained in conjunction with or prior to, during, or after the regatta.

24. Safety Regulations

- 24.1. The skipper of a boat that retires or does not intend to continue racing shall advise the Race Committee via VHF Channel 77.

Appendix A: Racing Area



Appendix B: Courses

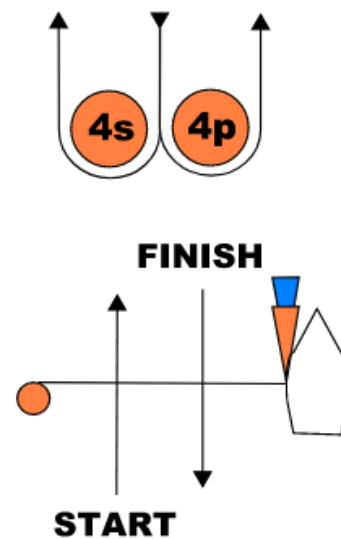
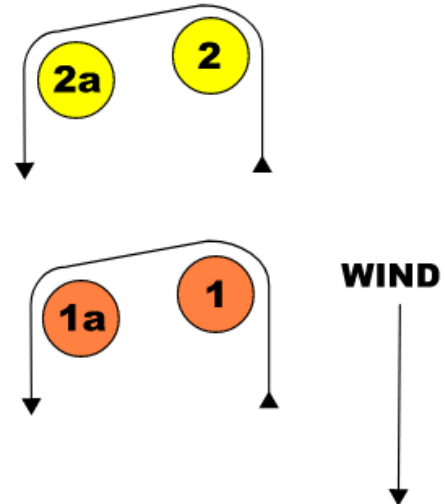
1. Windward-Leeward Courses

Mark Descriptions

| Mark | Description |
|---------------|-----------------------|
| Start, Finish | Mark with Orange Flag |
| 1, 1a, 4s, 4p | Orange Cylinder |
| 2, 2a | Yellow Cylinder |

Time Limits

| Mark 1 | Finish | Time After First Finisher in Division |
|------------|------------|---------------------------------------|
| 30 minutes | 90 minutes | 20 minutes |



Courses

| Course | Division 1 & 2 | Division 3 & 4 |
|--------|---|---|
| L1 | Start – 2 – 2a - Finish | Start – 1 – 1a - Finish |
| L2 | Start – 2 – 2a – 4s/4p – 2 – 2a - Finish | Start – 1 – 1a – 4s/4p – 1 – 1a - Finish |
| L3 | Start – 2 – 2a – 4s/4p – 2 – 2a – 4s/4p – 2 – 2a – Finish | Start – 1 – 1a – 4s/4p – 1 – 1a – 4s/4p – 1 – 1a – Finish |

If either 4p or 4s are missing, the remaining mark shall be left to port.

If mark 1a is missing, round mark 1 to port

If mark 2a is missing, round mark 2 to port

2. Passage Style Courses

Marks and Descriptions

| Mark | Description | Latitude | Longitude |
|---------------|---|---------------|----------------|
| Start, Finish | Mark with Orange Flag | | |
| LV1 | Orange Cylinder | 37°56'15.47"S | 147°43'25.12"E |
| LV2 | Yellow Cylinder | 37°56'38.46"S | 147°43'46.43"E |
| Harrington | Orange Cylinder (adjacent to Green Navigation Mark) | 37°55'52.74"S | 147°44'1.56"E |
| SWH | Orange Cylinder (adjacent to North Cardinal Mark) | 37°57'3.55"S | 147°42'42.84"E |
| Bluff Head | Orange Cylinder (adjacent to Green Navigation Mark) | 37°56'10.20"S | 147°42'35.90"E |
| Tiger | Orange Cylinder (adjacent to West Cardinal Mark) | 37°55'43.78"S | 147°43'16.08"E |

Note: Coordinates are indicative and marks out of position will not be grounds for redress

Course 1 (South-East Short)

Designated by Numeral Pennant 1



- Start
- LV1 (port)
- Tiger (port)
- Bluff Head (port)
- LV2 (port)
- Finish

Approximate Length 3.8nm

Course 2 (South-East Medium)

Designated by Numeral Pennant 2



- Start
- LV2 (port)
- Tiger (port)
- Bluff Head (port)
- LV2 (port)
- Finish

Approximate Length 4.9nm

Course 3 (South-East Long)

Designated by Numeral Pennant 3



- Start
- LV2 (port)
- Tiger (port)
- Bluff Head (port)
- LV2 (port)
- Bluff Head (port)
- LV1 (port)
- Finish

Approximate Length 6.2nm

Course 4 (East Short)

Designated by Numeral Pennant 4

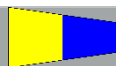


- Start
- Harrington (starboard)
- LV2 (starboard)
- LV1 (starboard)
- Harrington (port)
- Finish

Approximate Length 4.0nm

Course 5 (East Medium)

Designated by Numeral Pennant 5



- Start
- Harrington (starboard)
- LV2 (starboard)
- SWH (starboard)
- LV1 (starboard)
- Harrington (port)
- Finish

Approximate Length 5.1nm

Course 6 (East Long)

Designated by Numeral Pennant 6



- Start
- Harrington (starboard)
- LV2 (starboard)
- SWH (starboard)
- LV1 (starboard)
- LV2 (starboard)
- LV1 (starboard)
- Harrington (port)
- Finish

Approximate Length 6.2nm

Course 7 (S-SW Short)

Designated by Numeral Pennant 7



- Start
- SWH (starboard)
- Bluff Head (starboard)
- Tiger (starboard)
- Finish

Approximate Length 3.0nm

Course 8 (SSW Medium)

Designated by Numeral Pennant 8



- Start
- SWH (starboard)
- Bluff Head (starboard)
- Tiger (starboard)
- LV1 (starboard)
- Tiger (starboard)
- Finish

Approximate Length 4.1nm

Course 9 (SSW Long)

Designated by Numeral Pennant 9



- Start
- SWH (starboard)
- Bluff Head (starboard)
- Tiger (starboard)
- Harrington (starboard)
- LV2 (starboard)
- Tiger (starboard)
- Finish

Approximate Length 5.5nm

Time Limits for Passage Style Courses

| Finish | Time After First Finisher in Division |
|-------------|---------------------------------------|
| 150 minutes | 45 minutes |

3. Course Raymond Island

Marks and Descriptions

| Mark | Description | Latitude | Longitude |
|-------------|---|---------------|----------------|
| Start | Mark with Orange Flag | | |
| WW | Orange Cylinder | | |
| Harrington | Green Navigation Mark | 37°55'46.91"S | 147°44'1.78"E |
| Clearance | Yellow Cylinder | 37°53'28.43"S | 147°46'53.00"E |
| Point King | Red Navigation Mark | 37°53'0.48"S | 147°46'36.78"E |
| Fort King | Red Navigation Mark | 37°53'43.80"S | 147°44'10.68"E |
| GLYC Finish | As per Section 12 in these Sailing Instructions | 37°55'17.99"S | 147°43'25.07"E |

Note: Coordinates are indicative and marks out of position will not be grounds for redress

Course

Designated by Numeral Pennant 0



- Start
 - WW (port)
 - Harrington (port)
 - Clearance (port)
 - Point King (port)
 - Fort King (port)
 - GLYC Club Finish
- Approximate Length 8.5nm



Above: GLYC Finish (for Raymond Island course)

Time Limit for Raymond Island Course

| Finish | Time After First Finisher in Division |
|-------------|---------------------------------------|
| 150 minutes | 60 minutes |