



Sailing Instructions

Gippsland Lakes Yacht Club Inc

Classic Dinghy Regatta

As part of Paynesville Classic Boat Rally

Saturday March 2nd- Sunday March 3rd 2024

The Organising Authority is Gippsland Lakes Yacht Club Inc. (GLYC).

1. Rules

- 1.1. All races will be governed by the rules as defined in The Racing Rules of Sailing (RRS).
- 1.2. The Australian Sailing Special Regulations Part 2 shall apply for Off the Beach (OTB) boats.

2. Changes to Sailing Instructions

Any change to the sailing instructions will be posted 1.5 hours before the scheduled time of the 1st race on the day it will take effect, except that any change to the schedule of races will be posted by 19:00 on the day before it will take effect.

3. Communications with Competitors

Notices to competitors will be posted on the notice board located in the breezeway at GLYC.

4. Signals made ashore

- 4.1. Signals made ashore will be displayed on the official flagpole adjacent to the main rigging lawn.
- 4.2. When flag AP is displayed ashore, '1 minute' is replaced with 'not less than 30 minutes' in the race signal AP.

5. Schedule of Races

- 5.1. The schedule is as in the table below.

Date	Event	Time
March 2 nd	Registration	10:30 to 11:30
	Regatta Briefing	12:00
	Race Session 1	12:30
March 3 rd	Race Session 2	13:30
	Presentation	16:00

- 5.2. Up to 3 races will be sailed in each race session.
- 5.3. To alert boats that a race or sequence of races will begin soon, the orange starting line flag will be displayed with one sound at least five minutes before a warning signal is displayed.
- 5.4. At the finish line of the final race of a race session the Race Committee Vessel shall display code flags A/P over A to indicate that competitors once they have completed their race may return to shore.

6. Class Flag

Division	Classes	Class Flag
1	Sailfish	Naval Numeral 1
2	Dinghies with Yardstick < 113	Naval Numeral 2
3	Dinghies with Yardstick 113 and greater	Naval Numeral 3

7. Courses

The diagrams in Appendix A show the racing area and the course, the marks and the order in which marks are to be passed, and the side on which each mark is to be left.

8. The Start

- 8.1. Races will be started using RRS 26 with the Warning Signal made 3 minutes before the Starting Signal. This changes RRS 26.
- 8.2. The starting line will be between a staff displaying an orange flag on the committee boat at the starboard end and a staff displaying an orange flag on a pin-buoy at the port-end.
- 8.3. A boat that does not start within 5 minutes after her starting signal will be scored Did Not Start without a hearing. This changes RRS A5.1 and A5.2.

9. CHANGE OF THE NEXT LEG OF THE COURSE

There will be no changes to the course within a race.

10. THE FINISH

The finish line will be between a staff displaying a blue flag on the committee boat at the port end and a staff displaying an orange flag on a pin-buoy at the starboard end.

11. TIME LIMITS AND TARGET TIMES

- 11.1. The Mark 1 Time Limit, Race Time Limit (see RRS35) and the Target Time are shown in the table below.

<i>Mark 1 time limit</i>	<i>Race time limit</i>	<i>Target Time</i>
10 minutes	40 minutes	25 minutes

- 11.2. If no boat has passed Mark 1 within the Mark 1 Time Limit the race will be abandoned.
- 11.3. Failure to meet the target time will not be grounds for redress. This changes rule 62.1(a).

12. Scoring

The Low Point system as specified in RRS Appendix A will apply with the following changes :-

- a) When fewer than 5 races have been completed, a boat's series score will be the total of her race scores
- b) When 5 or 6 races have been completed, a boat's series score will be the total of her race scores excluding her worst score.

13. RISK STATEMENT

RRS 3 states: 'The responsibility for a boat's decision to participate in a race or to continue racing is theirs alone.' By participating in this event each competitor agrees and acknowledges that sailing is a potentially dangerous activity with inherent risks. These risks include strong winds and rough seas, sudden changes in weather, failure of equipment, boat handling errors, poor seamanship by other boats, loss of balance on an unstable platform and fatigue resulting in increased risk of injury. Inherent in the sport of sailing is the risk of permanent, catastrophic injury or death by drowning, trauma, hypothermia or other causes.

The Organising Authority, and the host club, their officers, members, servants and agents accept no responsibility in respect of loss of life, personal injury or loss or damage to property which may be sustained by reason of their participation or intended participation in this Event or howsoever arising in connection with this Event.

14. Safety

The safety categories applicable to these races are in accordance with the AS Special Regulations Part 2

- **SIGN ON** - On the day of the race, prior to going afloat, the person in charge (RRS 46) shall sign on for the race on the sheet provided at the entrance to the breezeway.
- **SIGN OFF** - At the conclusion of racing the boat shall sign off for the race on the sheet provided at the entrance to the breezeway.
- **RETIREMENT** - Boats that retire and/or do not finish shall inform the Tower/ Race Committee at the first reasonable opportunity. This shall be done by the expiration of the time limit for the race.

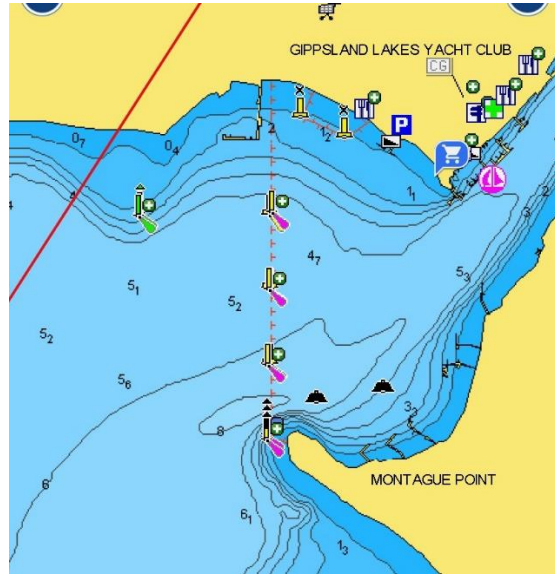
15. Insurance

All competing yachts shall have public liability insurance covering a racing risk extension for an amount of not less than Ten Million Dollars (\$10,000,000). All owners/competitors who complete the entry form are deemed to have made a declaration that they hold such cover.

16. Trophies

Trophies will be determined based on entries received.

APPENDIX A – Race Area & Course



**Classic Dinghy Course
Marks**

All marks will be orange inflatable.



**Classic Dinghy Course
Triangular with Downwind Finish**

Mark Rounding Order

Start – 1 – 2 – 3 - 1 – Finish

